

# S22

2,200 LB. CAPACITY

INTEGRATED LITHIUM-ION WALKIE STRADDLE STACKER



# SPECIFICATIONS

## FEATURES



### CHASSIS AND MAST

All steel, welded chassis offers unparalleled rigidity and durability. Adjustable forks - from 8" to 29.5" OD are mounted on an ITA style carriage. Standard forks are 42" long by 4" wide and 1.5" thick. Adjustable straddle legs on adjustable carriage models are 3" wide and allow preset outrigger dimensions from 38" to 50" inside dimension in 4" increments. Forkover models have a fixed width of 10" ID / 19.9" OD.

The S22-62 and S22-62R mono mast models are equipped with a non-telescoping mono mast with a single lifting chain, adjustable mast rollers and a chrome plated lift cylinder to provide smooth lifting / lowering and long service life. The S22-96 and S22-116 models are equipped with a telescoping, high-visibility mast with dual lifting chains, adjustable mast rollers and a clear view plexiglass mast guard.

### TILLER ARM CONTROLS

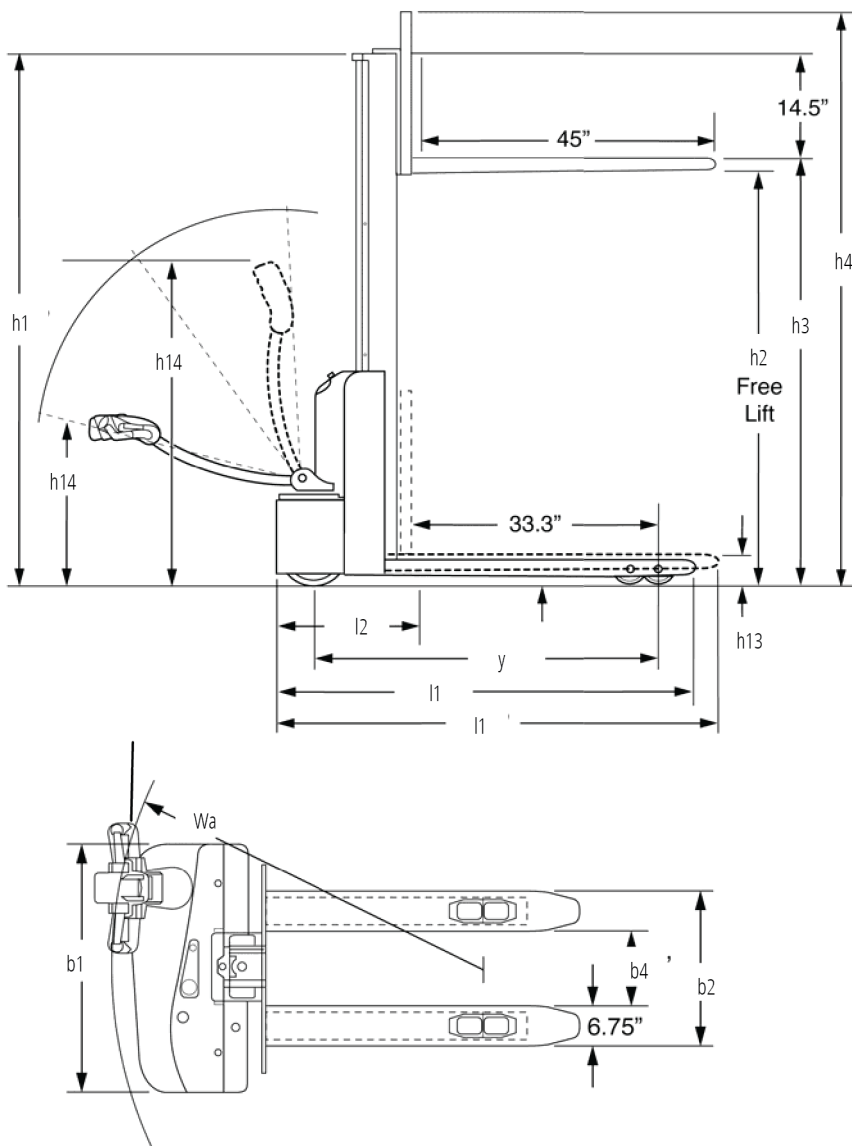
The offset steering arm provides excellent line of sight for operators and allows right-angle stacking in aisles as narrow as 60". Travel, lift and lower functions are located on the ergonomic operator handle. All operator controls are placed to be accessible without operators needing to lift a hand from the handle. Angled grips are designed to allow easy operation with either hand and a wrap-around guard, reverse switch, thumb controls and a horn are standard. The low-mounted tiller arm also offers excellent operator comfort and minimizes steering effort.

### SERVICEABILITY

Removable, two piece power head cover allows for easy maintenance and access to all wheel components.

## SPECIFICATIONS

S22-62R



Distinguishing mark	Manufacturer			Big Joe	Big Joe	Big Joe	Big Joe
	Model			S22-62R	S22-62	S22-96	S22-116
	Drive			Electric	Electric	Electrical	Electrical
	Load capacity	Q	lb.	2200	2200	2200	2200
	Load center distance	c	in.	24	24	24	24
	Load distance, center of drive axle to fork	x	in.	31.7	33.5	33.3	33.3
	Wheelbase	y	in.	44.3	47.6	50.8	50.8
Svc weight	Service weight		lb.	1016	1200	1450	1500
	Axle loading, laden (front/rear)		lb.	1410 / 1806	1502 / 1892	1619 / 2026	1669 / 2026
	Axle loading, unladen (front/rear)		lb.	756 / 262	924 / 270	1160 / 280	1210 / 280
Wheels/chassis	Wheel type			Polyurethane	Polyurethane	Polyurethane	Polyurethane
	Wheel size, front		in.	8.3 x 2.8	8.3 x 2.8	8.3 x 2.8	8.3 x 2.8
	Wheel size, rear		in.	3.1 x 2.4	4 x 2	4 x 2	4 x 2
	Additional wheels		in.	5 x 2	4 x 2	4 x 2	4 x 2
	Wheels, number (front/rear) - x=drive wheels			1x, 1/4	1x, 1/4	1x, 1/4	1x, 1/4
	Tread width, front	b10	in.	21	21	21	21
	Tread width, rear	b11	in.	15	41.7 / 45.7 / 49.6 / 53.5	41.7 / 45.7 / 49.6 / 53.5	41.7 / 45.7 / 49.6 / 53.5

SPECIFICATIONS

Dimensions	Max lift height	H	in.	62	62	96	116
	Retracted mast height	h1	in.	76.5	76.5	72.5	82.5
	Extended mast height	h4	in.	77.6	98.3	132	153
	Height of tiller handle in drive position (min / max)	h14	in.	33.9 / 47.3	33.9 / 47.3	33.9 / 47.3	33.9 / 47.3
	Height of base legs	h8	in.	4	4	4	4
	Lowered height	h13	in.	3.5	2.4	2.4	2.4
	Overall length	l1	in.	63.6	62	65.5	65.5
	Length to face of forks	l2	in.	18.3	20	23.5	23.5
	Overall width	b1/b2	in.	32	47.7 / 48.6 / 52.5 / 56.6	47.7 / 48.6 / 52.5 / 56.6	47.7 / 48.6 / 52.5 / 56.6
	Fork dimensions	s x e x l	in.	2.3 x 6.8 x 45	1.5 x 4 x 42	1.5 x 4 x 42	1.5 x 4 x 42
	Fork carriage width	b3	in.	24	30.7	30.7	30.7
	Fork spread	b5	in.	21.7	8 - 30	8 - 30	8 - 30
	Distance between base legs and loading surfaces	b4	in.	38 / 42 / 46 / 50	38 / 42 / 46 / 50	38 / 42 / 46 / 50	38 / 42 / 46 / 50
	Ground clearance, laden, below mast	m1	in.	1.2	1.2	1.2	1.2
	Ground clearance, center of wheelbase	m2	in.	1.6	1.6	1.6	1.6
Performance	Right angle stack, without clearance (assumes 40" W x 48" D pallet)	Ast	in.	78.3	77.3	79.3	79.3
	Turning radius	Wa	in.	52.5	52.5	54.5	54.5
	Travel speed, laden/unladen		mph	2.5 / 3.1	2.5 / 3.1	2.5 / 3.1	2.5 / 3.1
	Lifting speed, laden/unladen		fpm	24 / 43	24 / 43	24 / 43	24 / 43
Electrical	Lowering speed, laden/unladen		fpm	24 / 22	24 / 22	24 / 22	24 / 22
	Max gradeability, laden/unladen		%	3 / 10	3 / 10	3 / 10	3 / 10
	Service brake			Electromagnetic	Electromagnetic	Electromagnetic	Electromagnetic
	Drive motor rating S2 60min		kW	0.7	0.8	0.8	0.8
Additional	Lift motor rating at S3 15%		kW	2.2	3	3	3
	Battery voltage / nominal capacity		V/Ah	24/85	24/85	24/85	24/85
	Battery weight		lb.	95	95	95	95
	Type of drive control			DC	DC	DC	DC
	Steering design			Mechanical	Mechanical	Mechanical	Mechanical
	Sound pressure level at operator's ear		dB(A)	74	74	74	74
	Charger output current		A	15	15	15	15



S22-62R

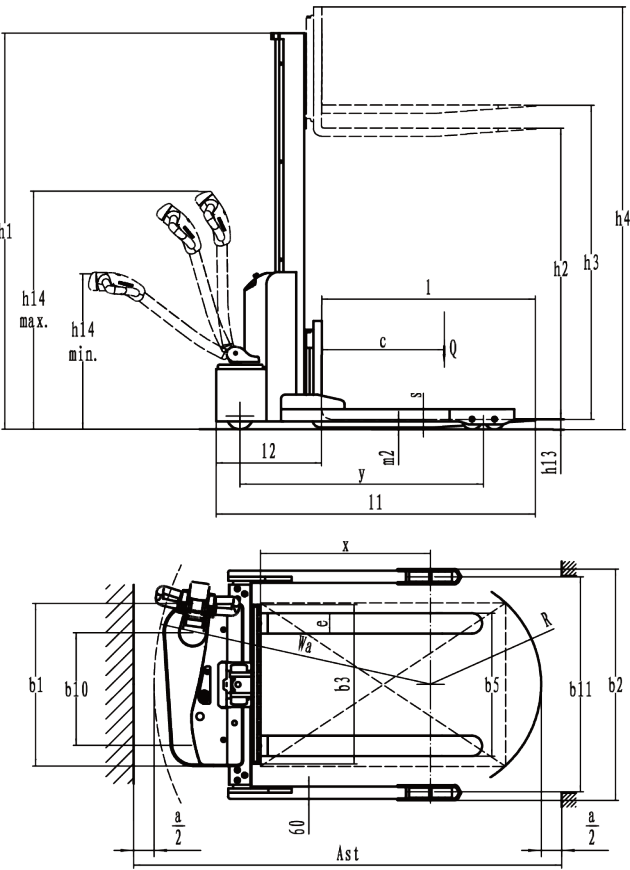


S22

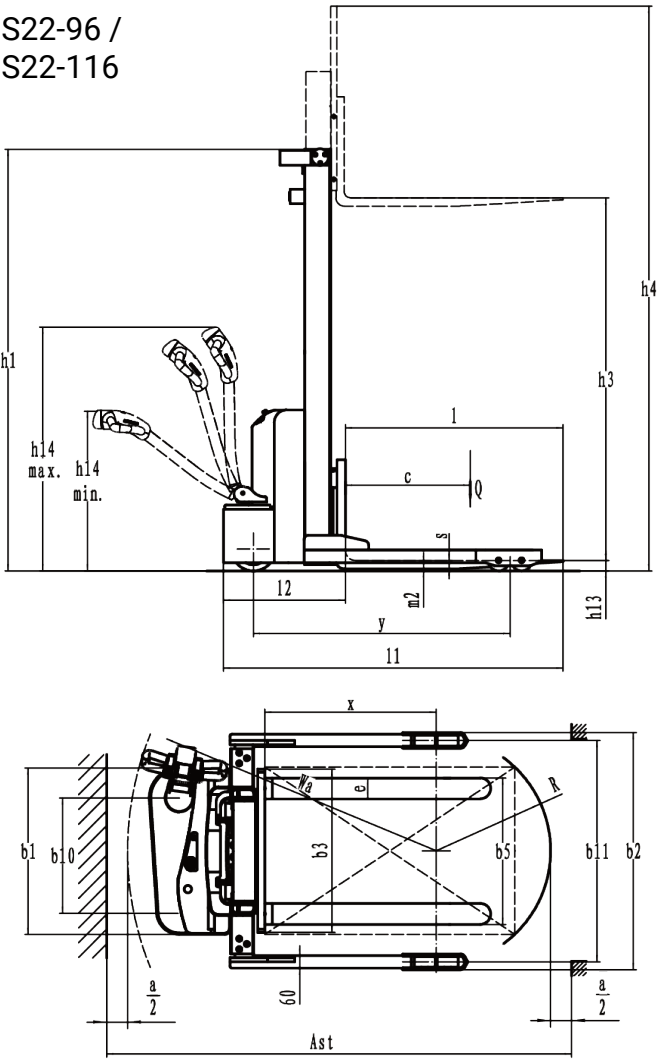
Mast type	Lift height h3 + h13 (in)	Height, mast lowered h1 (in)	Free lift h2 (in)	Height, mast extended h4 (in)
Mono mast	62	76.5	60.2	77.6
2-Stage limited free lift	96	72.5	-	98.3
	116	82.5	-	153

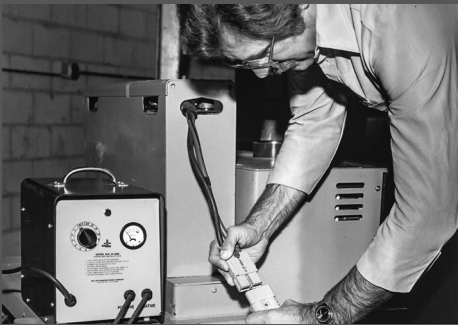
DIAGRAMS

S22-62



S22-96 /  
S22-116





Established in 1951, Big Joe is a customer-driven North American material handling equipment company. We distribute innovative products for in-between-handling applications, purpose-built counterbalanced lithium forklifts, and market-leading autonomous solutions. Based in Madison, Wisconsin, we provide engineering expertise, customer service, aftermarket parts, and warranty support to our extensive dealer network and customers.



Certification: Big Joe lift trucks are built in compliance with ANSI B56.1 and OSHA section 1910.178(A)(2). Lift truck specifications are subject to change without notice. Any specifications critical to the intended application of the forklift should be reviewed with your Big Joe dealer. Images may show optional equipment not available in all regions.



**630-916-2600**  
[sales@bigjoeforklifts.com](mailto:sales@bigjoeforklifts.com)  
[bigjoeforklifts.com](http://bigjoeforklifts.com)