

S22

2,200 LB. CAPACITY

WALKIE STRADDLE STACKER



SPECIFICATIONS



A COMPACT, FLEXIBLE AND EASY TO USE STACKER

For operations needing a stacker that's easy to use with minimal maintenance, the S22 is an obvious pick. An offset control handle makes this stacker very compact and easy for an operator to walk alongside when moving materials. Its maintenance-free AGM batteries minimize downtime, and a standard onboard charger plugs into a 120V wall outlet. With adjustable straddle legs and a variety of lift heights to suit the application, S22 provides an excellent entry-level solution.

FEATURES



Compact Footprint

Fitting into tight spaces is easy for the S22 stacker. Its offset control head design keeps length down. Four adjustable straddle widths allow operations to fit the load without requiring excess room for the equipment.

Ergonomics That Support the Operator

The offset steering arm provides excellent line of sight for operators. Angled grips are designed to allow easy operation with either hand and a wrap-around guard, reverse switch, thumb controls and a horn are standard. The low-mounted tiller arm also offers excellent operator comfort and minimizes steering effort. Storage on top of the stacker provides space for the operator to keep frequently-used tools at hand.

Straightforward Controls

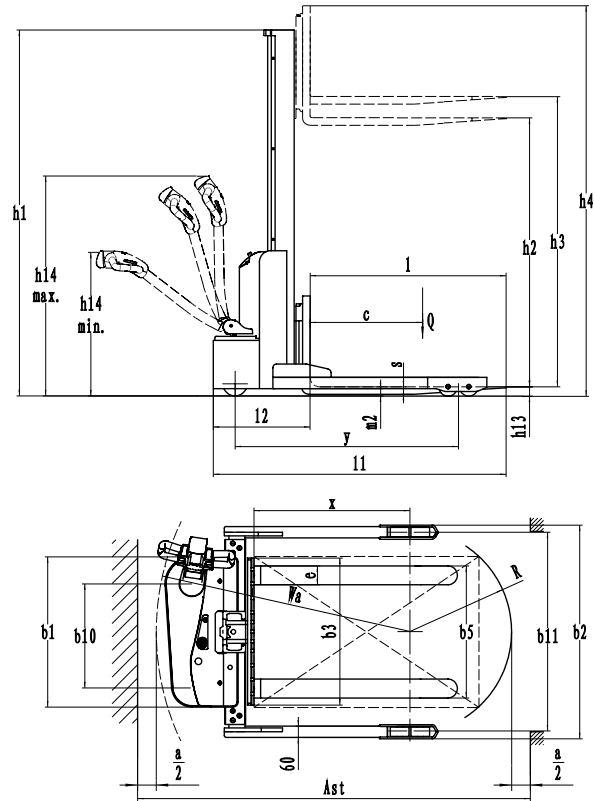
Both travel and lift/lower controls are conveniently located on the control head, using a thumb-actuated drive wheel for precise speed control, which helps in tight spaces and when walking alongside the equipment. The battery discharge indicator and key switch are easy to see and reach. The onboard charge cord is also accessible and easy to find.

Robust Build Quality

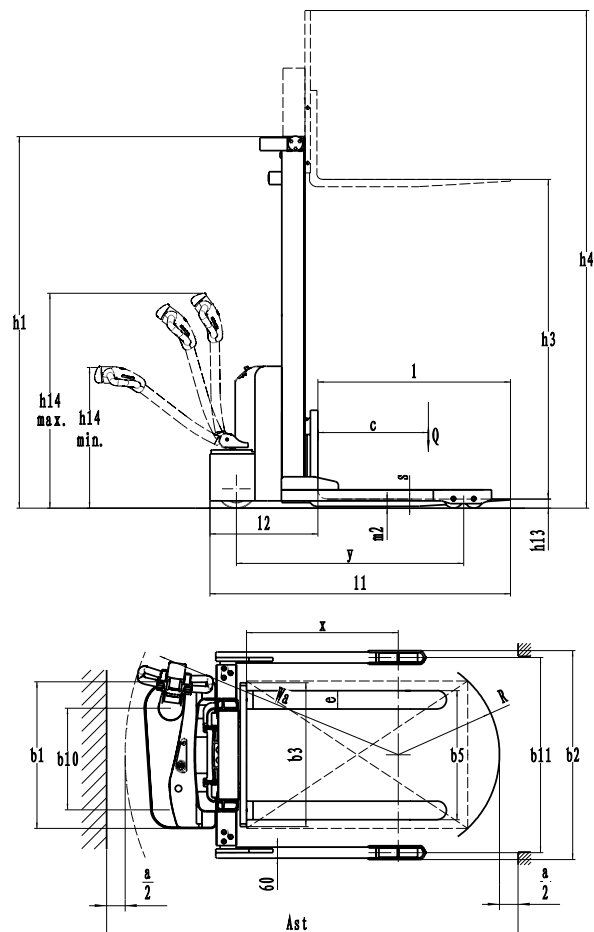
An all steel, welded chassis offers unparalleled rigidity and durability. Available non-telescoping mono mast and 2-stage telescoping mast feature adjustable rollers and chrome-plated lift cylinders to provide smooth operation and long service life. All models come standard with a plexiglass guard on the mast. And all models feature a stout, molded cover that is easily removable for service access.

DIAGRAMS

S22-62



S22-96 /
S22-116



SPECIFICATIONS

| | | | | | |
|---------------------|-------------------------------|---|----------------|------------------------|---------------------------|
| Distinguishing mark | 1.1 | Manufacturer | | | Big Joe |
| | 1.2 | Model designation | | | S22 |
| | 1.3 | Drive | | | Electric |
| | 1.4 | Operator type | | | Pedestrian |
| | 1.5 | Load capacity | Q | lb. | 2200 |
| | 1.6 | Load center distance | c | in. | 24 |
| | 1.8 | Load distance, center of drive axle to fork | x | in. | 33.3 |
| | 1.9 | Wheelbase ¹ | y | in. | 50.8 |
| | Service weight | 2.1 | Service weight | | lb. |
| 2.2 | | Axle loading, laden (front / rear) | | lb. | 1670 / 2030 |
| 2.3 | | Axle loading, unladen (front / rear) | | lb. | 1210 / 280 |
| Tires/chassis | 3.1 | Tire type | | | Polyurethane |
| | 3.2 | Tire size, front | | | 8.3x2.8 |
| | 3.3 | Tire size, rear | | | 4x2 |
| | 3.4 | Additional wheels (caster wheels) | | in. | 4x2 |
| | 3.5 | Wheels, number (front/rear) x=drive wheels | | | 1x, 1 / 4 |
| | 3.6.1 | Tread width, drive | b10 | in. | 21.0 |
| | 3.7.1 | Tread width, load ² | b11 | in. | 41.7 / 45.7 / 49.6 / 53.5 |
| Dimensions | 4.2 | Retracted mast height | h1 | in. | 82.5 |
| | 4.3 | Free lift height | h2 | in. | 0 |
| | 4.4 | Lift height | h3 | in. | 116.0 |
| | 4.5 | Height, mast extended | h4 | in. | 153.0 |
| | 4.9 | Height of tiller handle in drive position (min/max) | h14 | in. | 33.9 / 47.3 |
| | 4.10 | Height of wheel arms | h8 | in. | 4.0 |
| | 4.15 | Lowered height | h13 | in. | 2.4 |
| | 4.19 | Overall length | l1 | in. | 65.5 |
| | 4.20 | Length to face of forks | l2 | in. | 23.5 |
| | 4.21 | Overall width ² | b1/b2 | in. | 44.7 / 48.6 / 52.5 / 56.5 |
| | 4.22 | Fork dimensions | s x e x l | in. | 1.5 x 4 x 42 |
| | 4.24 | Fork carriage width | b3 | in. | 30.7 |
| | 4.25 | Fork spread | b5 | in. | 8 - 30 |
| | 4.26 | Inside width between straddle arms ² | b4 | in. | 38 / 42 / 46 / 50 |
| | 4.31 | Ground clearance, below mast | m1 | in. | 1.2 |
| | 4.32 | Ground clearance, center of wheelbase | m2 | in. | 1.6 |
| 4.34.1 | Right angle stack aisle width | Ast | in. | See Aisle Width Tables | |
| 4.35 | Turning radius | Wa | in. | 54.5 | |
| Performance Data | 5.1 | Travel speed, laden/unladen | | mph | 3.1 / 3.4 |
| | 5.2 | Lifting speed, laden/unladen | | fpm | 20 / 39 |
| | 5.3 | Lowering speed, laden/unladen | | fpm | 21 / 21 |
| | 5.8 | Max gradeability, laden/unladen | | % | 3 / 10 |
| | 5.10 | Service brake | | | Electromagnetic |
| Electric | 6.1 | Drive motor rating S2 60min | | kW | 0.65 |
| | 6.2 | Lift motor rating at S3 15% | | kW | 2.2 |
| | 6.4 | Battery voltage / nominal capacity | | V/Ah | 24V / 85Ah |
| | 6.5 | Battery weight | | lb | 95 |
| Additional | 8.1 | Type of drive control | | | DC |
| | 10.5 | Steering design | | | Mechanical |
| | 15.1 | Charger output current | | A | 15 |

¹ 47.6 in. when equipped with mono mast.

² S22 equipped with fixed fork carriage features non-adjustable straddle legs with a fixed inner dimension of 10 in. and outer dimension of 19.9 in.

AISLE WIDTHS

All measurements shown are in inches

| S22 Min. Right Angle Stack without Clearance (in.) | | | | |
|---|--------------------|-----------|-----------|-----------|
| 38 in. Straddle | Load Length | | | |
| Load Width | 36 | 40 | 42 | 48 |
| 36 | 76.9 | 76.9 | 76.9 | 77.7 |
| 42 in. Straddle | Load Length | | | |
| Load Width | 36 | 40 | 42 | 48 |
| 36 | 78.8 | 78.8 | 78.8 | 78.8 |
| 40 | 78.8 | 78.8 | 78.8 | 79.3 |
| 46 in. Straddle | Load Length | | | |
| Load Width | 36 | 40 | 42 | 48 |
| 36 | 80.8 | 80.8 | 80.8 | 80.8 |
| 40 | 80.8 | 80.8 | 80.8 | 80.8 |
| 42 | 80.8 | 80.8 | 80.8 | 80.8 |
| 50 in. Straddle | Load Length | | | |
| Load Width | 36 | 40 | 42 | 48 |
| 36 | 82.8 | 82.8 | 82.8 | 82.8 |
| 40 | 82.8 | 82.8 | 82.8 | 82.8 |
| 42 | 82.8 | 82.8 | 82.8 | 82.8 |
| 48 | 82.8 | 82.8 | 82.8 | 82.8 |

MAST CHART

| Mast Type | Carriage | Overall Dimensions (in.) | | | | | Load Capacity at Max Fork Height (lb.) |
|---------------------------|----------------------|--------------------------|----------------|-----------------|------------------|--------------------|--|
| | | Lift Height | Lowered Height | Extended Height | Free Lift Height | Truck Weight (lb.) | |
| Mono Mast | Fixed Fork | 62 | 76.5 | 77.6 | 56 | 1020 | 2200 |
| | Class 2 ITA Carriage | 62 | 76.5 | 98.3 | 56 | 1200 | |
| 2-Stage Limited Free Lift | Class 2 ITA Carriage | 96 | 72.5 | 132.0 | 0 | 1450 | |
| | Class 2 ITA Carriage | 116 | 82.5 | 153.0 | 0 | 1500 | |

STANDARD/OPTIONAL EQUIPMENT

- Standard
- Optional

| | | |
|----------------------|---|---|
| Electrical System | 24V infinitely variable travel control | ● |
| Battery and Charging | Integral maintenance-free AGM batteries | ● |
| | 120V onboard charger, 15A output | ● |
| Drive System | Permanent magnet DC drive and lift motors | ● |
| Wheels & Tires | Drive tire: (1) 8.3 in. x 2.8 in. polyurethane | ● |
| | Load wheels: (2) 4 in. x 2 in. polyurethane | ● |
| | Caster: (1) 4 in. x 2 in. polyurethane | ● |
| | Polyurethane traction drive tire | ○ |
| Front End Equipment | Class II ITA fork carriage: 32 in. wide | ● |
| | Class II ITA fork carriage: 40 in. wide | ○ |
| | Class II ITA fork carriage: 48 in. wide | ○ |
| | Fixed fork carriage: 14.25 in. tall, 24 in. wide | ○ |
| | 36 in. tall load backrest for models equipped with ITA carriage (lift height 96 in. or above) | ● |
| | 42 in. Class II ITA forks | ● |
| | 36 in. Class II ITA forks | ○ |
| | Fixed forks, 46 in. long, 2.25 in. thick, 6.75 in. wide | ○ |
| | ClearView polycarbonate mast guard | ○ |
| Operator | Offset control handle | ● |
| | Thumb control travel functions | ● |
| | Belly button reversing switch | ● |
| | Lift and lowering controls in control handle | ● |
| | Battery discharge indicator | ● |
| | Hour meter | ● |
| | Key switch | ● |



Established in 1951, Big Joe is a customer-driven North American material handling equipment company. We distribute innovative products for in-between-handling applications, purpose-built counterbalanced lithium forklifts, and market-leading autonomous solutions. Based in Madison, Wisconsin, we provide engineering expertise, customer service, aftermarket parts, and warranty support to our extensive dealer network and customers.



Certification: Big Joe lift trucks are built in compliance with ANSI B56.1 and OSHA section 1910.178(A)(2). Lift truck specifications are subject to change without notice. Any specifications critical to the intended application of the forklift should be reviewed with your Big Joe dealer. Images may show optional equipment not available in all regions.



630-916-2600
sales@bigjoeforklifts.com
bigjoeforklifts.com

2026-04-29_V01